

# ***PARTS CATALOG***

---

## **PowerShot A410**



© CANON INC., 2005

#### 商標

商標「Canon」、キヤノン製品の名称、サービス名等は、キヤノン株式会社の商標または登録商標です。（キヤノングループ各社の商標、登録商標の場合もあります。）  
Adobe、Adobeロゴ、Acrobat、AcrobatロゴおよびReaderは、Adobe Systems Incorporated（アドビシステムズ社）の米国ならびに他の国における商標または登録商標です。  
本サービスマニュアル中に記載されているその他の製品等の名称は、一般に各社の商標または登録商標です。

#### 著作権

本サービスマニュアルの著作権は、キヤノン株式会社が保有しています。  
事前にキヤノン株式会社の書面による許可を得ることなく、本サービスマニュアルの全部または一部を複製、転載、他の言語への翻訳等することを禁止します。

#### Trademarks:

Canon Inc.'s trademark, logos, product names, service marks and those trademark, logos, product names, service marks licensed to Canon Inc. by any of its affiliate or subsidiary are registered or unregistered marks of Canon Inc. or such affiliate or subsidiary in Japan and/or other countries.

Adobe, the Adobe logo, Acrobat, the Acrobat logo and Reader are either registered trademarks or trademarks of Adobe Systems Incorporated in the United States of America and/or other countries.

All other trademarks, product names, service marks are generally either registered or unregistered marks of their respective owners.

#### Copyright:

All copyrights in the content of this Service Manual are owned or controlled by Canon Inc. You are not permitted to copy, reproduce, download, modify, adapt or translate in any way the content of this Service Manual for any purpose other than the purpose contemplated herein without prior written consent of Canon Inc.

# CONTENTS

## PowerShot A410

Casing Parts -----	Pg1
Internal Parts -----	Pg2
Optical Unit -----	Pg3
Fuse -----	Pg4
Accessories-1 -----	Pg5
Accessories-2 -----	Pg6
Service Tools-1 -----	Pg7
Service Tools-2 -----	Pg8

### CLASS凡例

- A: 使用頻度 高
- B: 使用頻度 中
- C: 使用頻度 低
- D: 安全規格部品
- E: 消耗部品
- F: 標準ネジ、ワッシャー
- S: 供給制限品
- Y: サービス工具

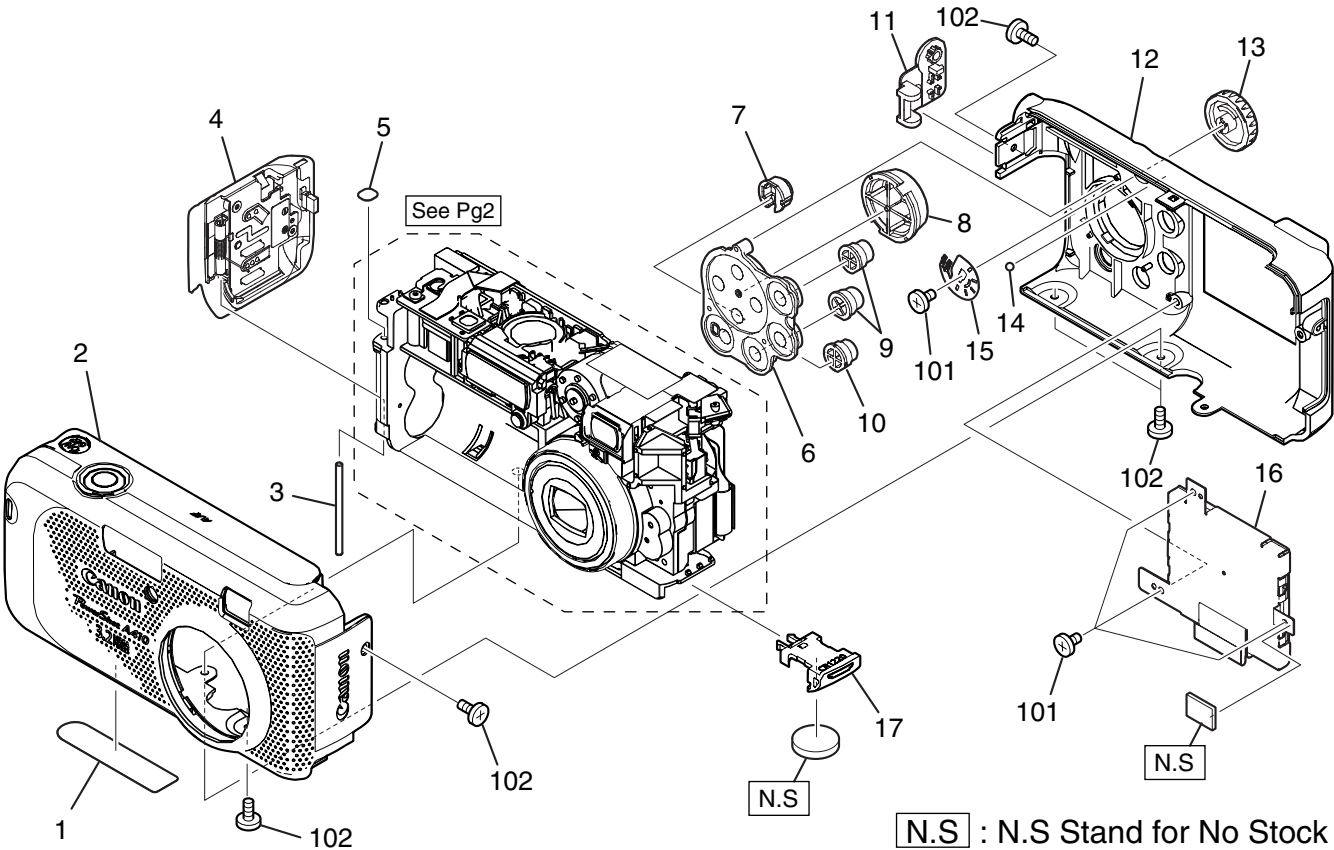
### Category of CLASS

- A: Frequency of use: High
- B: Frequency of use: Middle
- C: Frequency of use: Low
- D: Safety-related critical parts
- E: Consumable parts
- F: Standard screws and washers
- S: Supply of the parts is limited
- Y: Service Tools

### CAUTION

⚠ がついている部品は安全上重要な部品です。交換時は、必ず指定の部品を使用してください。  
Especially critical parts in the power circuit block should not be replaced with other marks.  
Critical parts are marked with ⚠ in this parts list

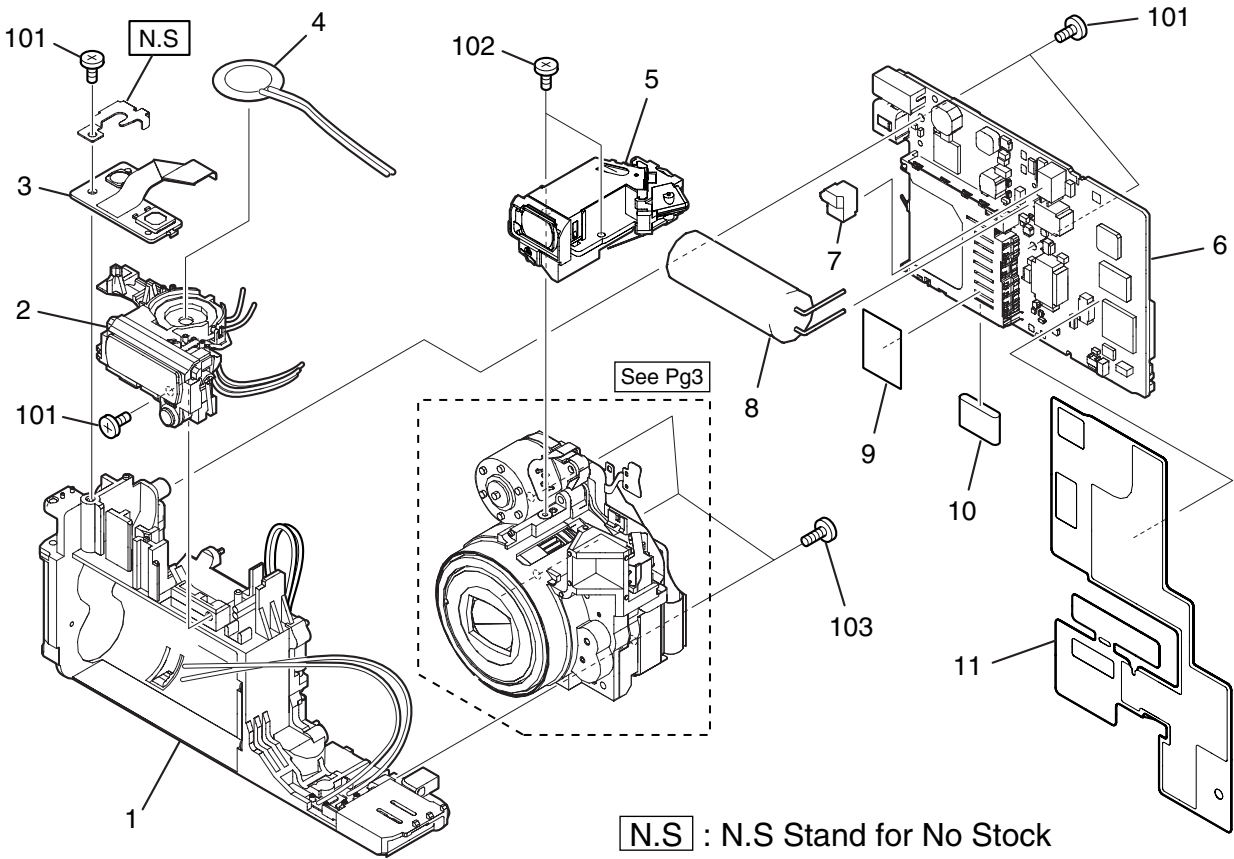
# Casing Parts



# PARTS LIST

NEW	SYMBOL	PARTS NO.	CLASS	QTY	DESCRIPTION	REMARKS
*	1	CY1-6447-000	B	1	PLATE, BODY NUMBER	#13061*****
*	2	CM1-3050-000	B	1	COVER UNIT, FRONT	FOR SILVER MODEL
*		CM1-3102-000	B	1	COVER UNIT, FRONT	FOR METALIC GRAY MODEL
*		CM1-3103-000	B	1	COVER UNIT, FRONT	FOR BLUE MODEL
*		CM1-3104-000	B	1	COVER UNIT, FRONT	FOR CHAMPAGNE MODEL
*		CM1-3105-000	B	1	COVER UNIT, FRONT	FOR DARK GRAY MODEL
*	3	CD3-4491-000	C	1	SHAFT, BATTERY COVER	
*	4	CM1-3052-000	B	1	COVER UNIT, BATTERY	FOR SILVER MODEL
*		CM1-3203-000	B	1	COVER UNIT, BATTERY	FOR OTHER MODELS
*	5	CD3-5186-000	C	1	SHEET, SHAFT	
*	6	CD3-4475-000	C	1	BASE, BUTTON	
*	7	CY1-6442-000	B	1	BUTTON UNIT, PRINT	
*	8	CD3-4472-000	B	1	BUTTON, CROSS KEY	
*	9	CD3-4470-000	B	2	BUTTON ,MENU	
*	10	CD3-4471-000	B	1	BUTTON, SET	
*	11	CD3-4464-000	B	1	COVER, JACK	
*	12	CY1-6443-000	B	1	COVER UNIT, REAR	FOR SILVER MODEL
*		CY1-6444-000	B	1	COVER UNIT, REAR	FOR OTHER MODELS
*	13	CD3-4465-000	B	1	DIAL, MODE	
*	14	CD3-1994-000	C	1	BALL, MODE DIAL	
*	15	CD3-4478-000	C	1	CONTACT, MODE DIAL	
*	16	CY1-6440-000	B	1	LCD UNIT	
*		CY1-6441-000	B	1	LCD UNIT (SELECTION)	
*	17	CD3-4481-000	B	1	HOLDER, LITHIUM BATTERY	
	101	XA4-5170-257	F	4	SCREW	
	102	XA4-9170-357	F	5	SCREW	

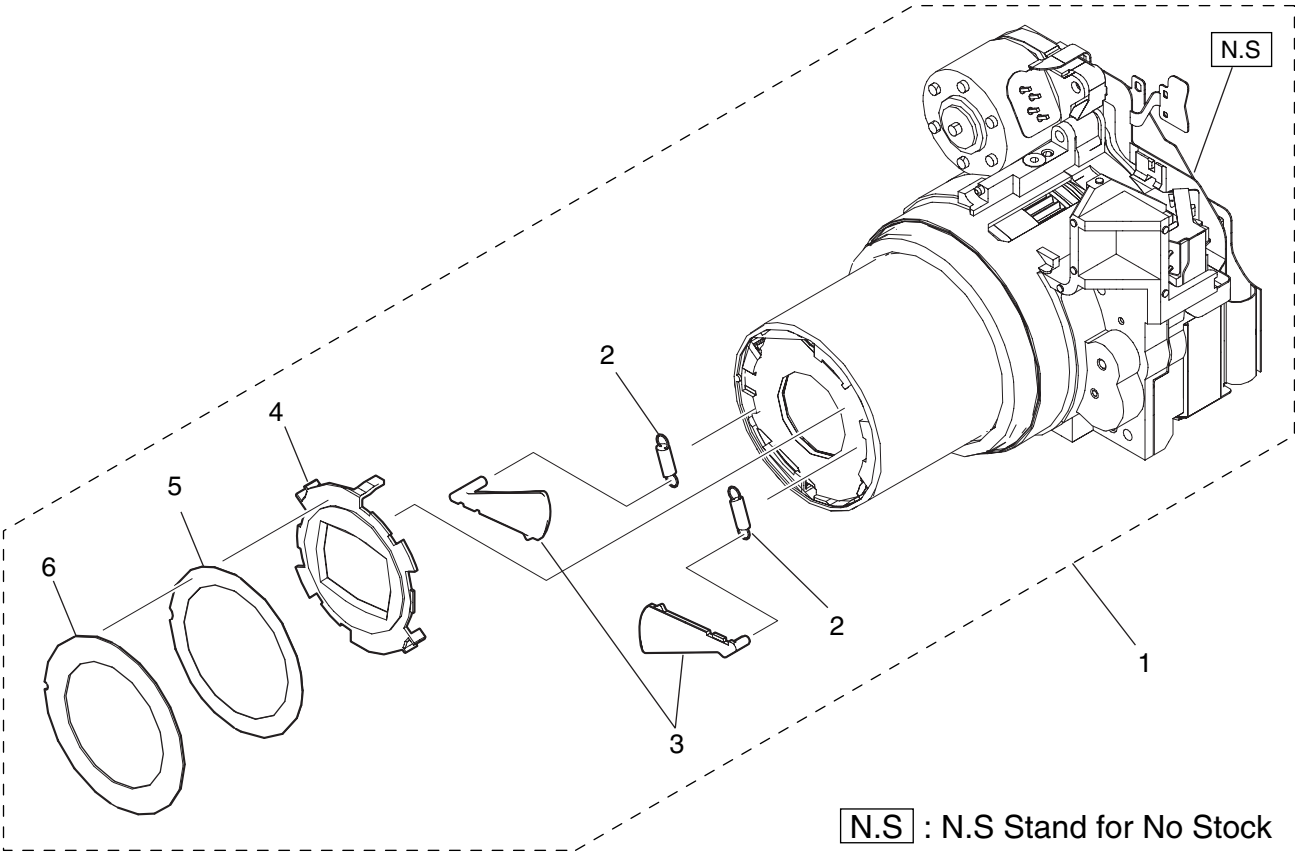
# Internal Parts



# PARTS LIST

NEW	SYMBOL	PARTS NO.	CLASS	QTY	DESCRIPTION	REMARKS
*	1	CY1-6446-000	C	1	BATTERY BOX UNIT	
*	2	CM1-3053-000	C	1	FLASH UNIT	
*	3	CY1-6445-000	C	1	PCB ASS'Y, TOP	
*	4	CM1-2984-000	C	1	BUZZER UNIT	
*	5	CM1-3049-000	C	1	FINDER UNIT	
*	6	CM1-3054-000	C	1	PCB ASS'Y, MAIN	
*	7	CD3-3007-000	C	1	CAP, TRIGGER	
*	8	CK9-1173-000	C	1	CAPACITOR, AL-EL, 90μF, 330V	
	9	CD3-4068-000	C	1	SHEET, EMI	
*	10	CD3-4479-000	C	1	GASKET, SD	
*	11	CD3-5701-000	C	1	SHEET, MAIN	
	101	XA4-5170-357	F	4	SCREW	
	102	XA4-9140-357	F	2	SCREW	
	103	XA4-9170-457	F	3	SCREW	

Optical Unit



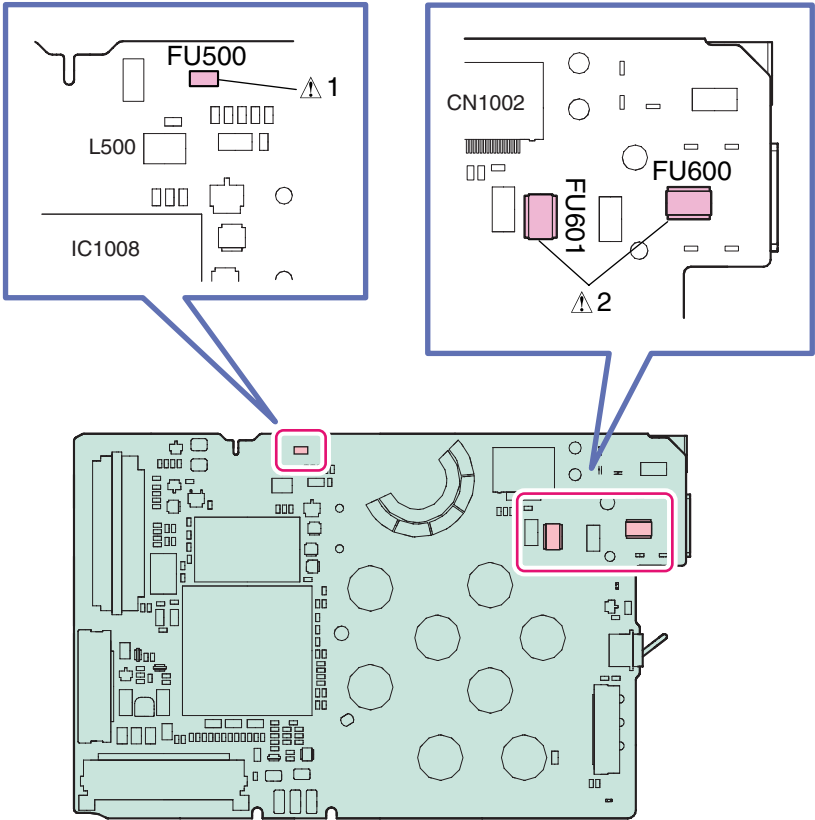
**N.S** : N.S Stand for No Stock



PARTS LIST

NEW	SYMBOL	PARTS NO.	CLASS	QTY	DESCRIPTION	REMARKS
*	1	CM1-3048-000	B	1	OPTICAL UNIT	
*	2	CD3-4335-000	C	2	SPRING, BARRIER CLOSE	
*	3	CD3-4330-000	B	2	PLATE, BARRIER	
*	4	CD3-4332-000	B	1	COVER, BARRIER	
*	5	CD3-4345-000	C	1	TAPE, FRONT PLATE	
*	6	CD3-4333-000	B	1	PLATE, FRONT	

Fuse



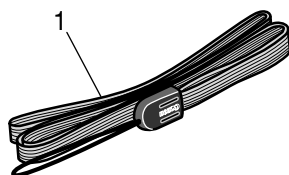
MAIN P.C.B. ASS'Y  
(Primary Side)

PARTS LIST

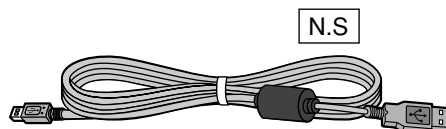
NEW	SYMBOL	PARTS NO.	CLASS	QTY	DESCRIPTION	REMARKS
	△1	VD7-2812-001	D	1	FUSE, KOA TF16SN2.00T	FU500
	△2	CY4-6074-000	D	2	FUSE, MATSU. DENKI UNHS206	FU600, FU601

## Accessories-1

**Wrist Strap WS-800**



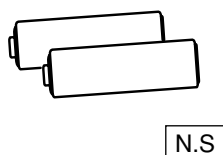
**USB Interface Cable  
IFC-400PCU**



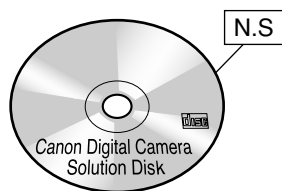
**Multi Media Card  
MMC-16M**



**Alkaline Batteries (X2)**



**Canon Digital Camera  
Solution Disk**



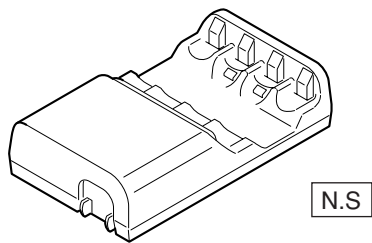
**N.S** : N.S Stand for No Stock

PARTS LIST

NEW	SYMBOL	PARTS NO.	CLASS	QTY	DESCRIPTION	REMARKS
*	1	C84-1334-000	B	1	STRAP, WRIST WS-800	

# Accessories-2

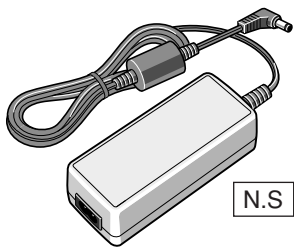
**Battery Charger CB-4AH**



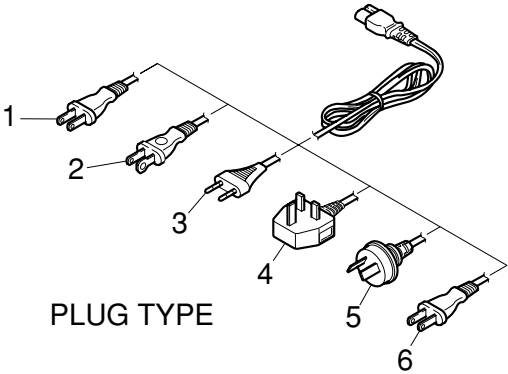
**NiMH Battery NB4-200**



**Compact Power Adapter  
CA-PS800**



**AC Cable**



**N.S** : N.S Stand for No Stock

PARTS LIST

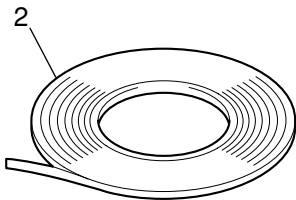
NEW	SYMBOL	PARTS NO.	CLASS	QTY	DESCRIPTION	REMARKS
	1	D82-0641-000	C	1	CABLE, AC, JAPAN	FOR JAPAN
	2	WT3-5063-000	C	1	AC CABLE(N) FOR BC-15N	FOR USA, CANADA
	3	D82-0643-000	C	1	CABLE, AC, EUROPE	FOR EUROPE, ASIA
	4	D82-0644-000	C	1	CABLE, AC, UK	FOR ASIA
	5	D82-0645-001	C	1	CABLE, AC, AUSTRALIA	FOR AUSTRALIA
	6	WT3-5087-000	C	1	CABLE, AC, CHINA	FOR CHINA

Service Tools-1

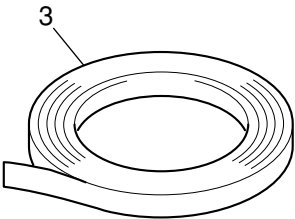
**DIA Bond NO.1663G Black**



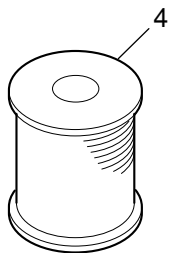
**Adhesive Tape SONY T4000  
(Double-side Tape)**



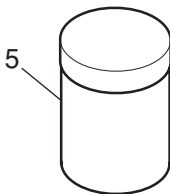
**Adhesive Tape 3M NO.56  
(Electric Insulation Tape)**



**Lead Free Solder RMA-98**



**Logenest Rambda A-74**



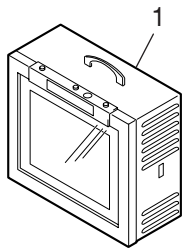


PARTS LIST

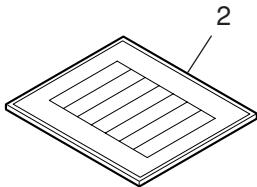
NEW	SYMBOL	PARTS NO.	CLASS	QTY	DESCRIPTION	REMARKS
	1	CY9-8129-000	Y	1	BOND, DIA BOND NO.1663G BLACK	200ml
	2	CY4-6012-000	Y	1	ADHESIVE TAPE, SONY T4000	6mm × 50m roll
	3	CY4-6018-000	Y	1	ADHESIVE TAPE, 3M NO.56	15mm × 66m roll
	4	CY9-4045-000	Y	1	SOLDER, LEAD FREE RMA-98	
	5	CY9-8102-000	Y	1	LUBE, LOGENEST RAMBDA A-74	80g

# Service Tools-2

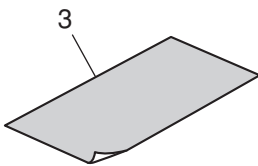
**Color Viewer (5500° K)**



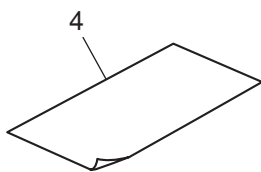
**Standard Color Bar Chart**



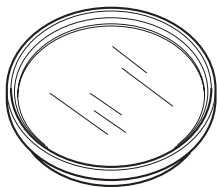
**18% Gray Chart**



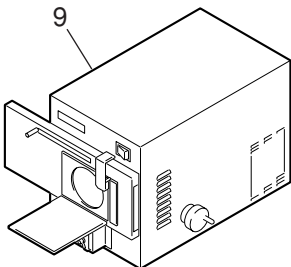
**Zoom/AF Chart (1)**



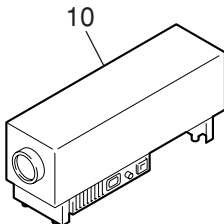
- C-12 Filter** ————— 5
- W-10 Filter** ————— 6
- FL-W Filter** ————— 7
- ND-4 Filter** ————— 8



**Brightness Box**



**Infinity Collimator**



# PARTS LIST

NEW	SYMBOL	PARTS NO.	CLASS	QTY	DESCRIPTION	REMARKS
	1	CY9-1562-100	Y	1	COLOR VIEWER 5500K	FOR 100-120V AC
		CY9-1562-200	Y	1	COLOR VIEWER 5500K	FOR 200-240V AC
	2	DY9-2002-000	Y	1	COLOR BAR CHART	
	3	CY9-1563-000	Y	1	CHART, 18% GRAY	
*	4	CY9-1592-000	Y	1	CHART, ZOOM/AF (1)	
	5	CY9-1555-000	Y	1	FILTER, C-12	
	6	CY9-1556-000	Y	2	FILTER, W-10	
	7	CY9-1557-000	Y	1	FILTER, FL-W	
	8	CY9-1553-000	Y	1	FILTER, ND-4	
	9	CY9-1566-100	Y	1	BRIGHTNESS BOX	FOR 100-120V AC
		CY9-1566-200	Y	1	BRIGHTNESS BOX	FOR 200-240V AC
10		CY9-1569-100	Y	1	INFINITY COLLIMATOR	FOR 100-120V AC
		CY9-1569-200	Y	1	INFINITY COLLIMATOR	FOR 200-240V AC